

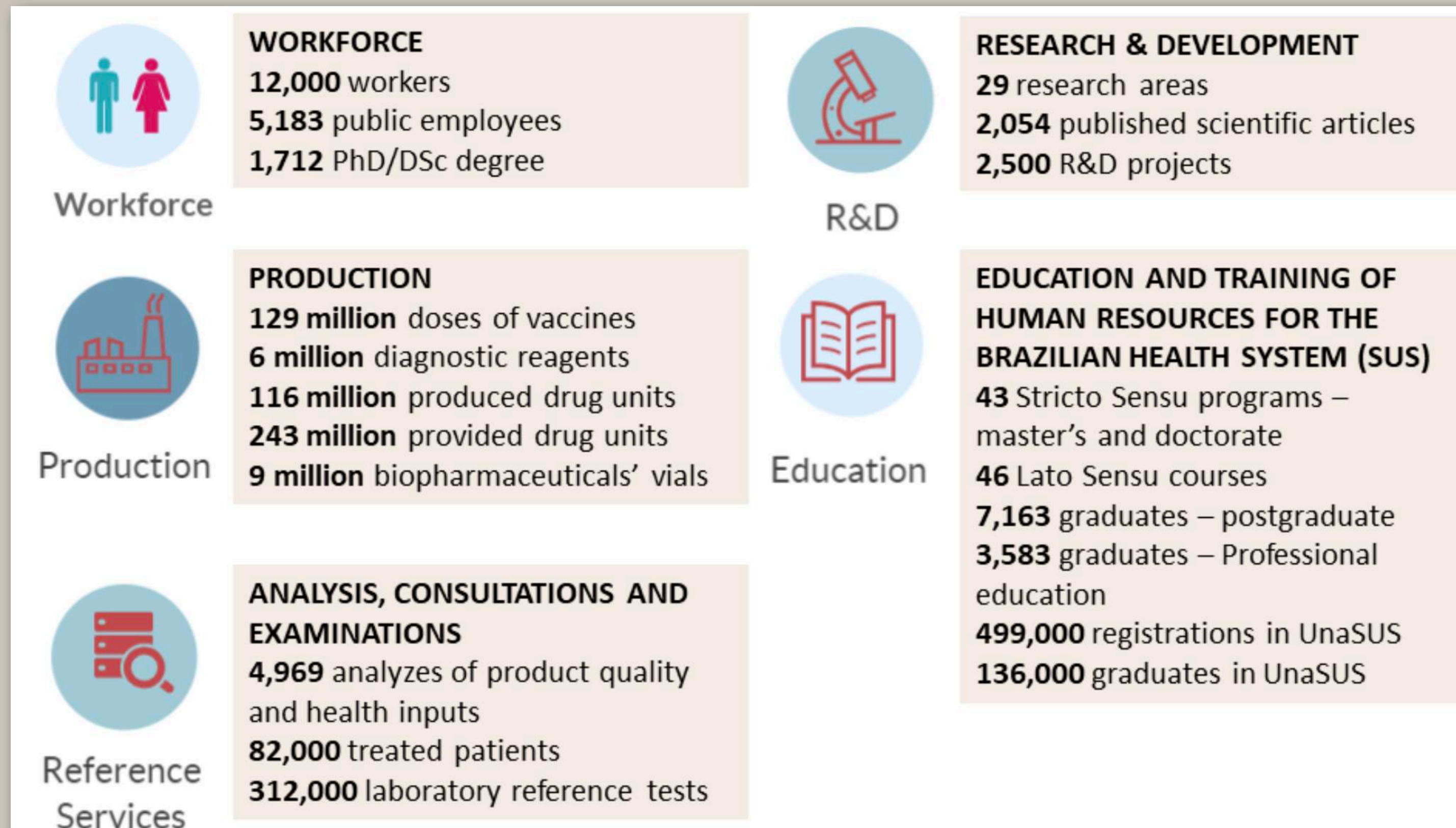
Fiocruz: 120 yr in defense of life

ENRICH IN BRAZIL - COVID-19:
INTERNATIONAL COOPERATION IN STI IN
THE HEALTH SECTOR IN BRAZIL AND EUROPE

Fiocruz and the COVID-19 challenge

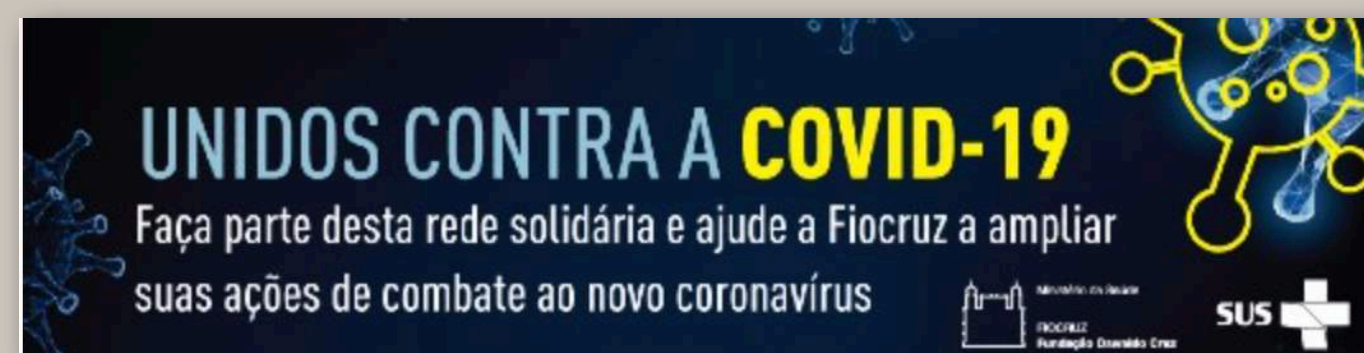


Fiocruz, a National Health Research Institution



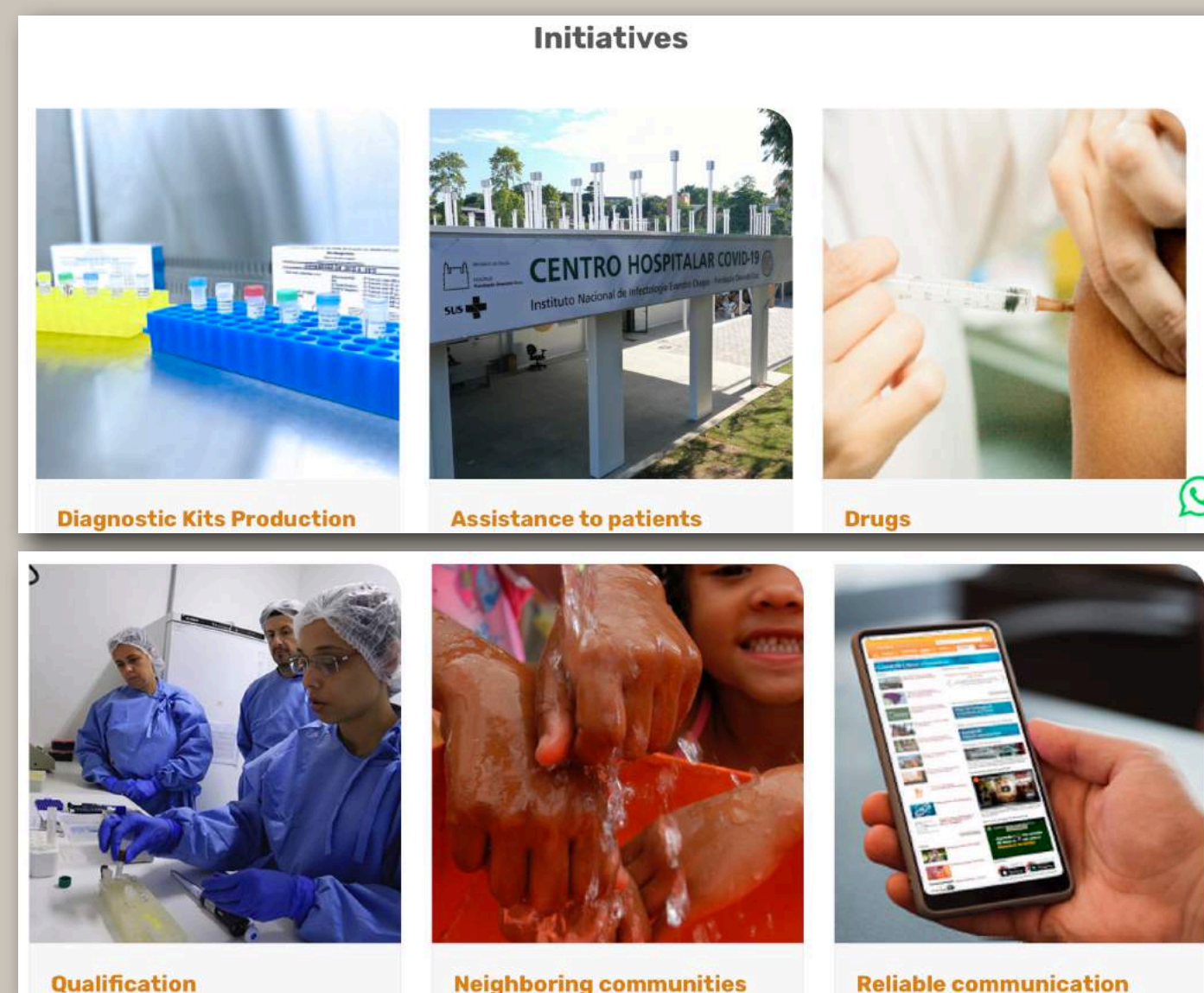
Fiocruz facing the COVID-19 challenges

Fund raising for health care activities



New hospital center and investment in clinical trials

Analytical centrals for diagnosis



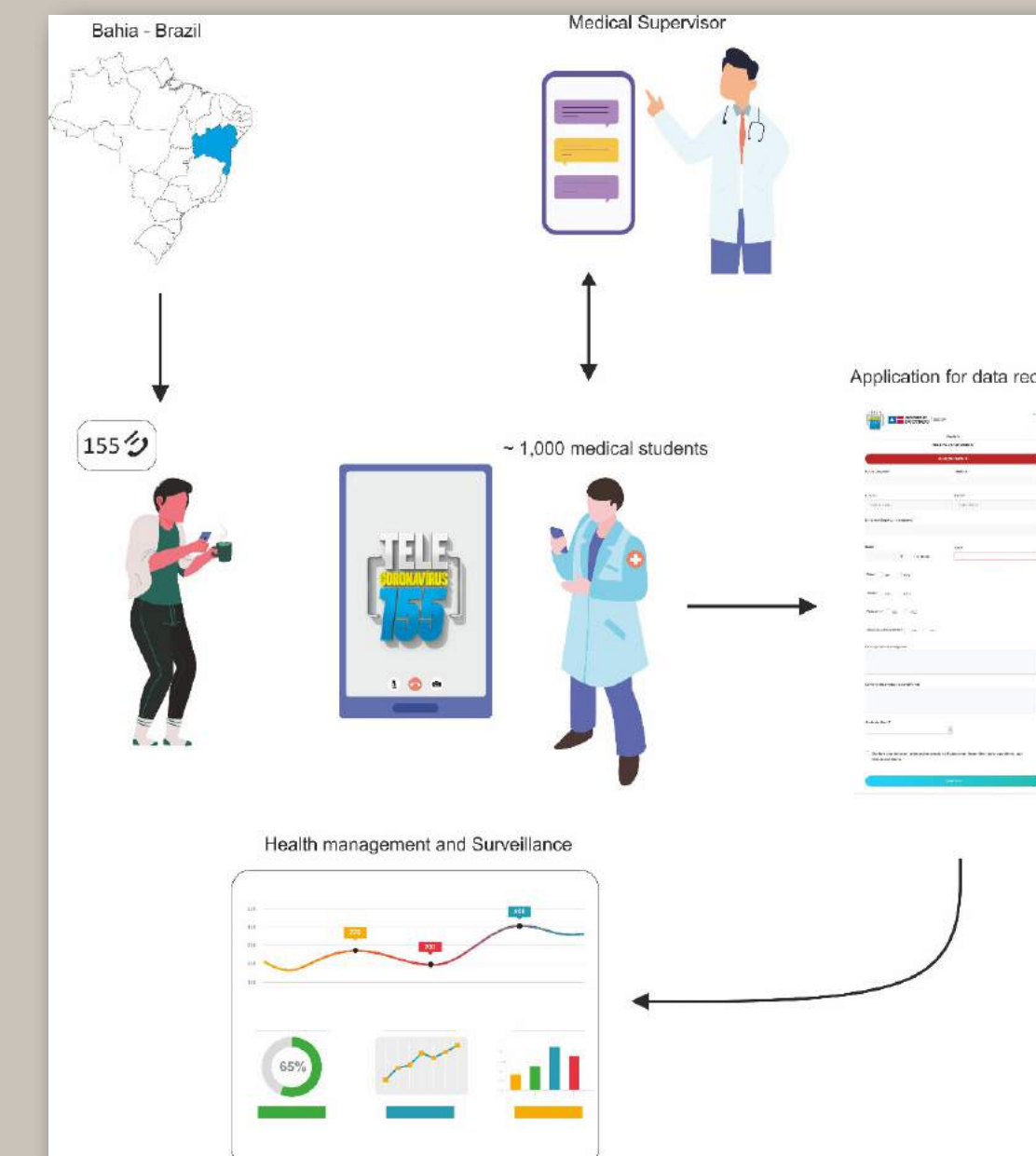
July, 2020

Fiocruz facing the COVID-19 challenges

Education and Communication



Telecoronavirus



<div> </div>		
Dias de Operação 87	Atendimentos 83990	Com Sinal de Alerta 30787 Sem Sinal de Alerta 53203

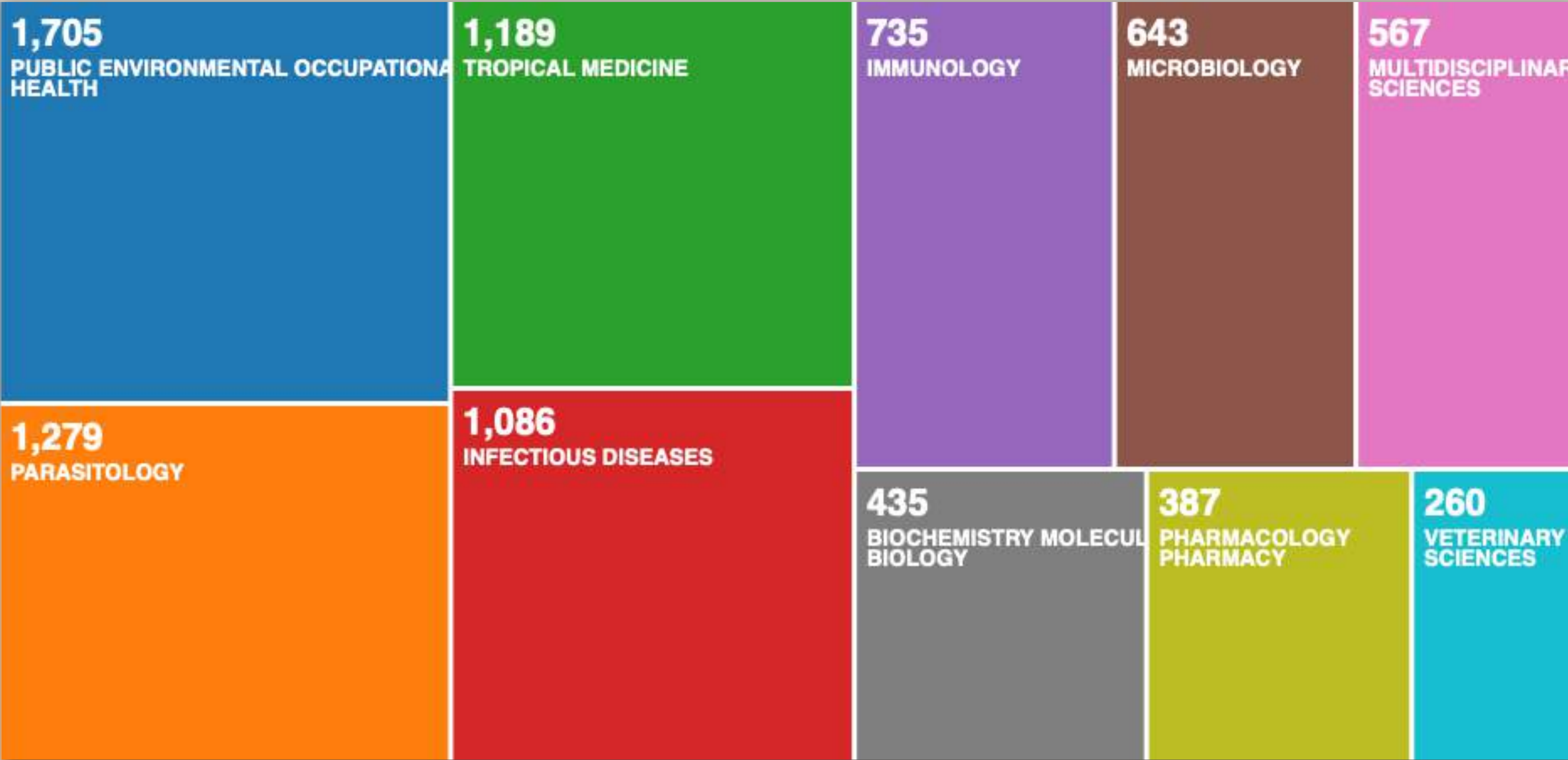
Capacity building on COVID Dx for all 27 State Central Labs

Capacity building on COVID Dx for Latin American countries together with PAHO

July, 2020

Fiocruz scientific production

All areas, last 5 yr



July, 2020

Fiocruz scientific production

Performance indicators

Outputs in Top Citation Percentiles ⚙️

+ Add to Reporting

Publications in top 10% most cited worldwide



Fundacao Oswaldo Cruz:

12.2%

Brazil:

8.7%

> Analyze in more detail

International Collaboration ⚙️

+ Add to Reporting

Publications co-authored with Institutions in other countries



Fundacao Oswaldo Cruz:

33.8%

Brazil:

30.0%

Publications in Top Journal Percentiles ⚙️

+ Add to Reporting

Publications in top 10% journals by CiteScore Percentile



Fundacao Oswaldo Cruz:

27.7%

Brazil:

19.7%

> Analyze in more detail

Academic-Corporate Collaboration ⚙️

+ Add to Reporting

Publications with both academic and corporate affiliations



Fundacao Oswaldo Cruz:

1.0%

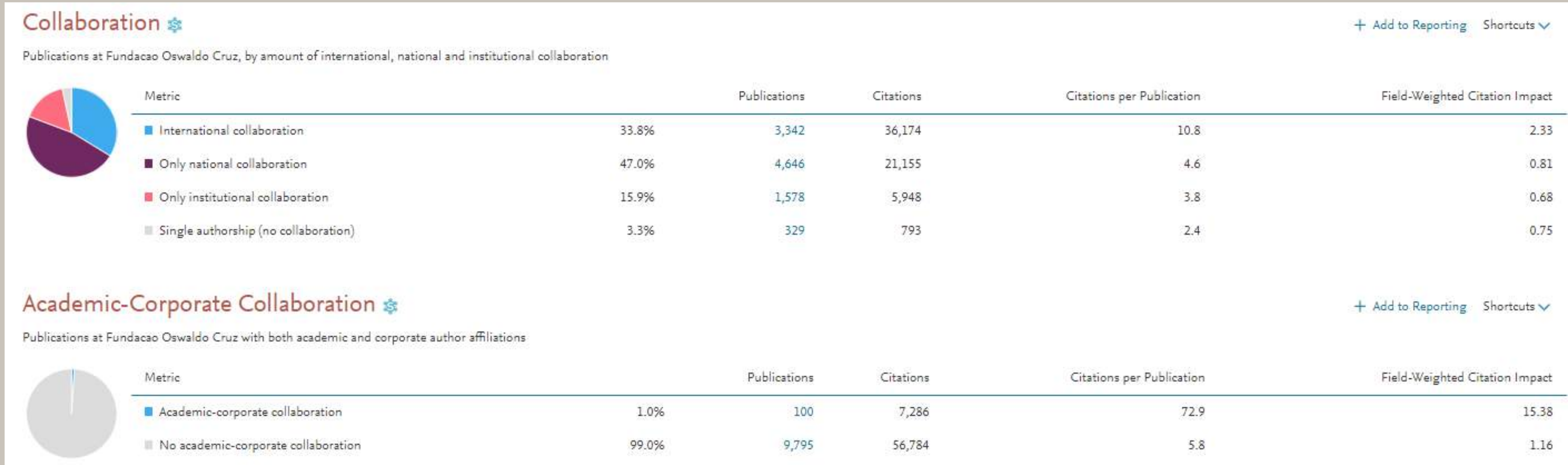
Brazil:

1.4%

From a Clarivate report for CAPES; Kindly borrowed from Connie McManus/CAPES

July, 2020

Fiocruz scientific production



From a Clarivate report for CAPES; Kindly borrowed from Connie McManus/CAPES

Publications on COVID-19



130 records for (cu=Brazil AND TS=COVID) AND DOCUMENT TYPES: (Article)

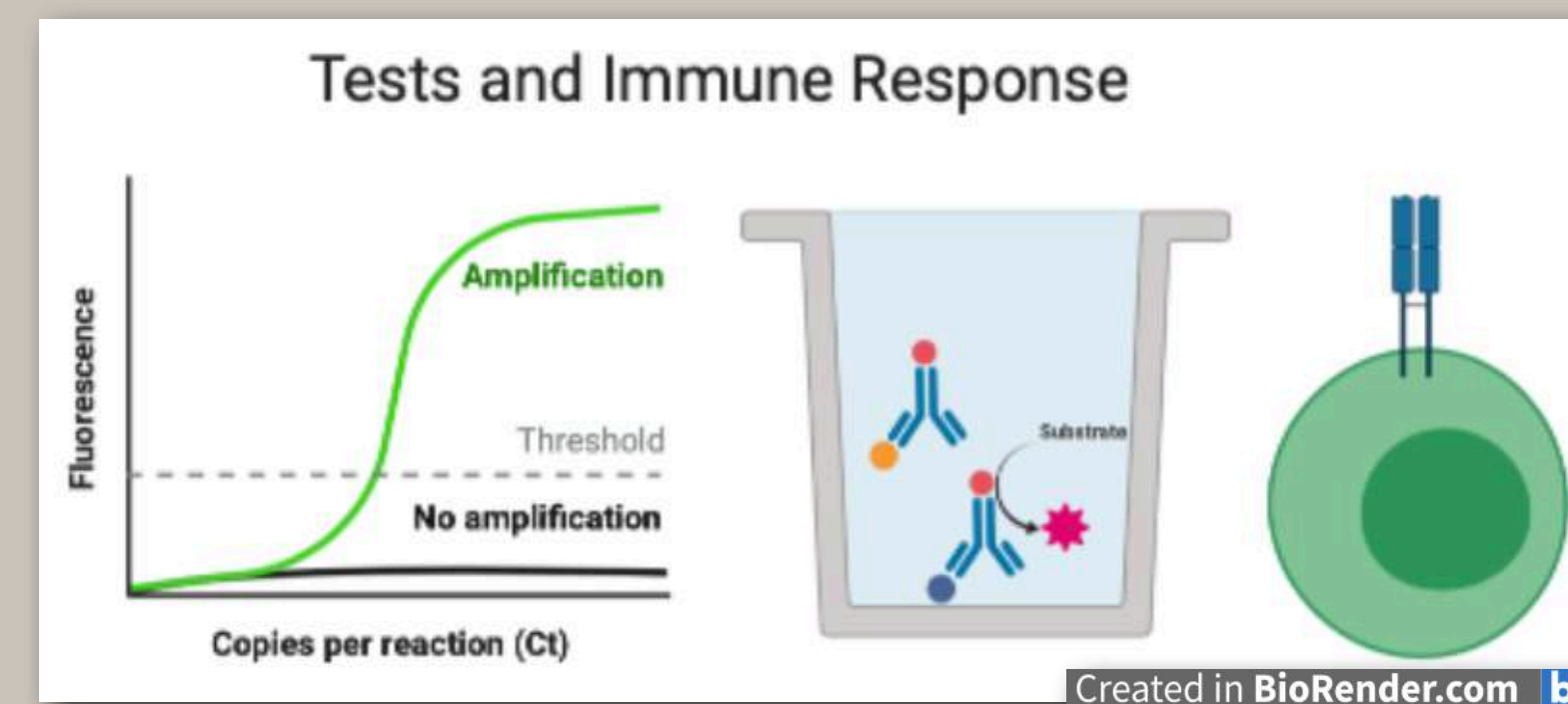
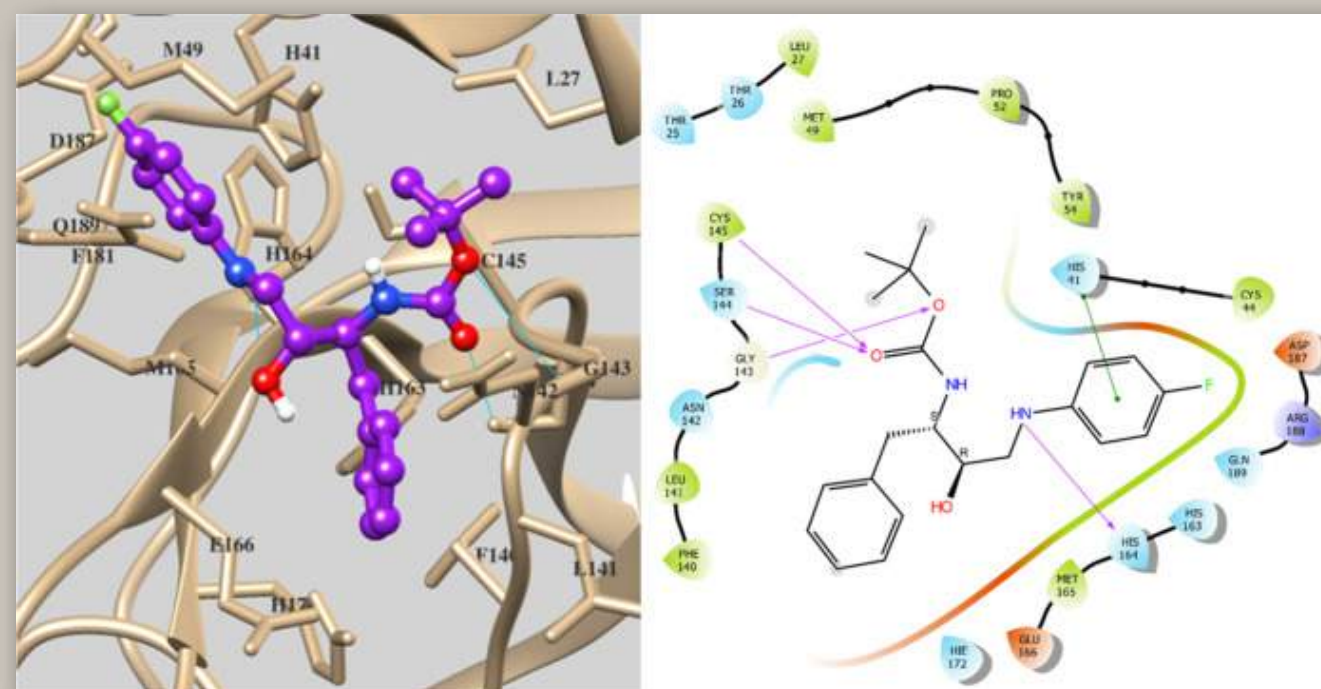


35 records for ORGANIZATION-ENHANCED: (Fundacao Oswaldo Cruz) AND TOPIC: (COVID)

Topic	% Fiocruz
PEOH	48,6
Environmental	11,1
Trop. Med.	44,4
Parasitology	66,7
Health Care Sci	40,0
Multidiscp	0,0
Exp Med Res	50.0
Phys Mat	0,0
Internal Med	50,0
Virology	50,0
Anthropology	100
Applied Biotech	100

Fiocruz publications on COVID-19

Drugs, Tests and Immune Response

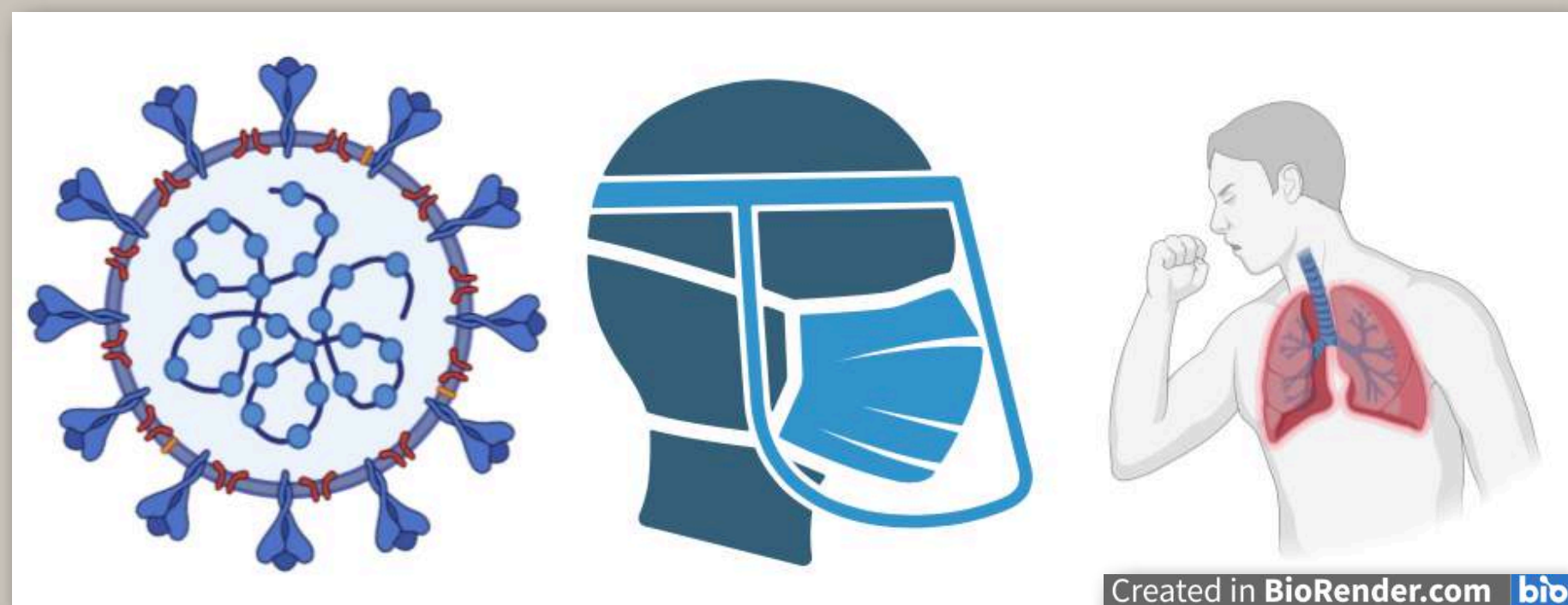


- Discovery of New Hydroxyethylamine Analogs against 3CLpro Protein Target of SARS-CoV-2: Molecular Docking, Molecular Dynamics Simulation, and Structure-Activity Relationship Studies. [10.1021/acs.jcim.0c00326](https://doi.org/10.1021/acs.jcim.0c00326)
- Coagulation modifiers targeting SARS-CoV-2 main protease Mpro for COVID-19 treatment: an in silico approach. [10.1590/0074-02760200179](https://doi.org/10.1590/0074-02760200179)
- Role of nonstructural proteins in the pathogenesis of SARS-CoV-2. [10.1002/jmv.25858](https://doi.org/10.1002/jmv.25858)

- Protective immunity after COVID-19 has been questioned: What can we do without SARS-CoV-2-IgG detection? [10.1016/j.cellimm.2020.104114](https://doi.org/10.1016/j.cellimm.2020.104114)
- COVID-19: a meta-analysis of diagnostic test accuracy of commercial assays registered in Brazil. [10.1016/j.bjid.2020.04.003](https://doi.org/10.1016/j.bjid.2020.04.003)
- What is the potential function of microRNAs as biomarkers and therapeutic targets in COVID-19? [10.1016/j.meegid.2020.104417](https://doi.org/10.1016/j.meegid.2020.104417)
- COVID-19 faecal-oral transmission: Are we asking the right questions? [10.1016/j.scitotenv.2020.138919](https://doi.org/10.1016/j.scitotenv.2020.138919)

Fiocruz publications on COVID-19

Clinical, therapeutics and ELSA



- Effect of High vs Low Doses of Chloroquine ...: A Randomized Clinical Trial.
10.1001jamanetworkopen.2020.8857
- Patients with COVID-19 and neurological manifestations ... 10.1016/j.ijid.2020.05.123
- Human T leukaemia Type 1 and COVID-19.
10.3390/pathogens9060438
- COVID-19: An Overview of ... Patients With Liver Diseases ... 10.1016/j.cgh.2020.04.074

- Social Distancing Measures ... Potential Impacts and Challenges in Brazil 10.1590/1413-81232020256.1.10502020
- The Intensive Use of the Internet... in the Context of COVID-19 and the Risks for Self-Inflicted Violence
10.1590/1413-81232020256.1.11472020
- Personal Data Usage and Privacy Considerations in the COVID-19 Global Pandemic 10.1590/1413-81232020256.1.11792020
- Perspectives on Battling COVID-19 in Countries of Latin America and the Caribbean 10.4269/ajtmh.20-0571
- The Endless Challenges of Arboviral Diseases in Brazil
10.3390/tropicalmed5020075

Fiocruz

International collaborations

- Hosts seven WHO and PAHO collaborating Centers;
- Designated as reference institution for COVID-19 in the americas;
- Laboratory for Respiratory Viruses nominated WHO Reference Lab;
- Associate member of the Pasteur Institute Network;
- Member of the International Consortium of Personalized Medicine and the EULAC project on PerMed.

