



ENRICH in Brazil

Filipe Miguel Cassapo

ANPEI / Sistema Fiep

Webinar: Internacionalização de Startups - Oportunidades e desafios do mercado europeu, 25 June 2019



ENRICH is an initiative of the European Union, executed in Brazil by the CEBRABIC project, that has received funding from the European Union's Horizon 2020 research and innovation programme under grant agreement No 733531. Responsibility for the information and views set out in this publication lies entirely with the authors.

www.brazil.enrichcentres.eu
brazil@enrichcentres.eu

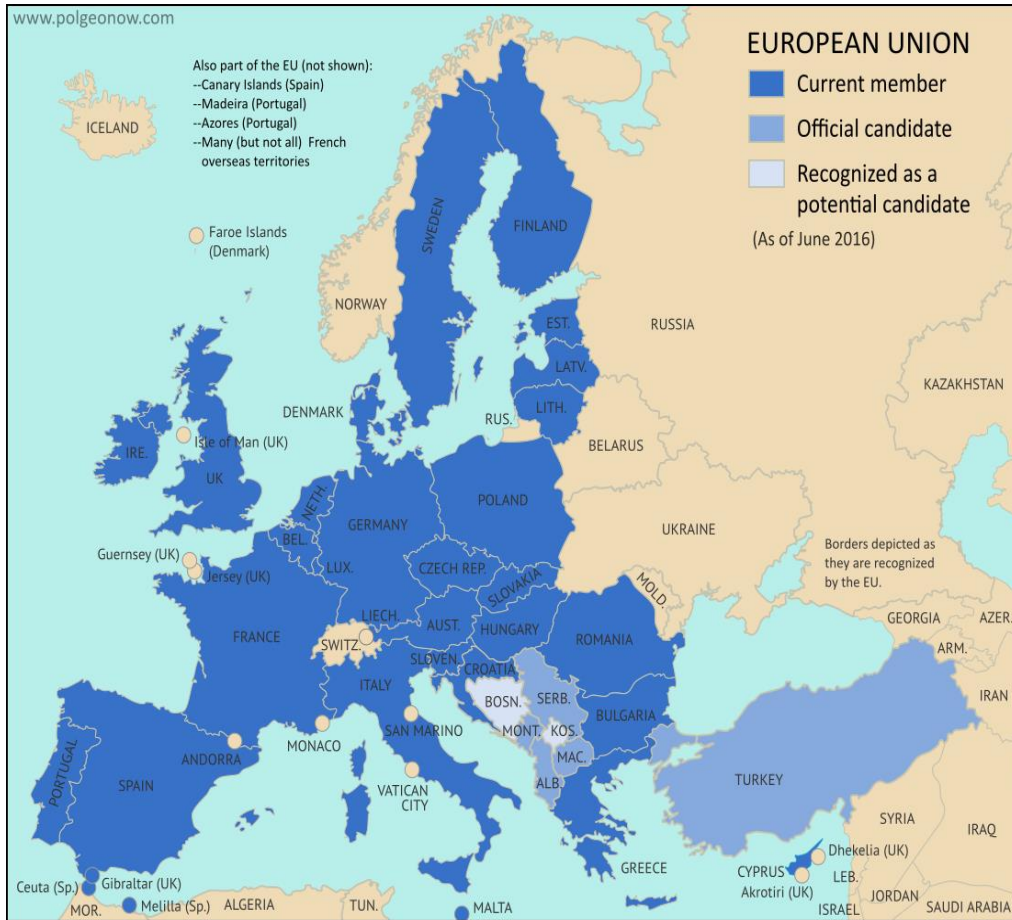


1. Basics about Europe

2. ENRICH in Brazil



The European Union



- 6% of the World's population
- 20% of world expenditure on research
- 32% of high-impact publications
- 32% of patent applications
- Some of the best universities in the world
- Some of the most innovative companies in the world

47 countries

28 member states of the EU

19 in the euro area

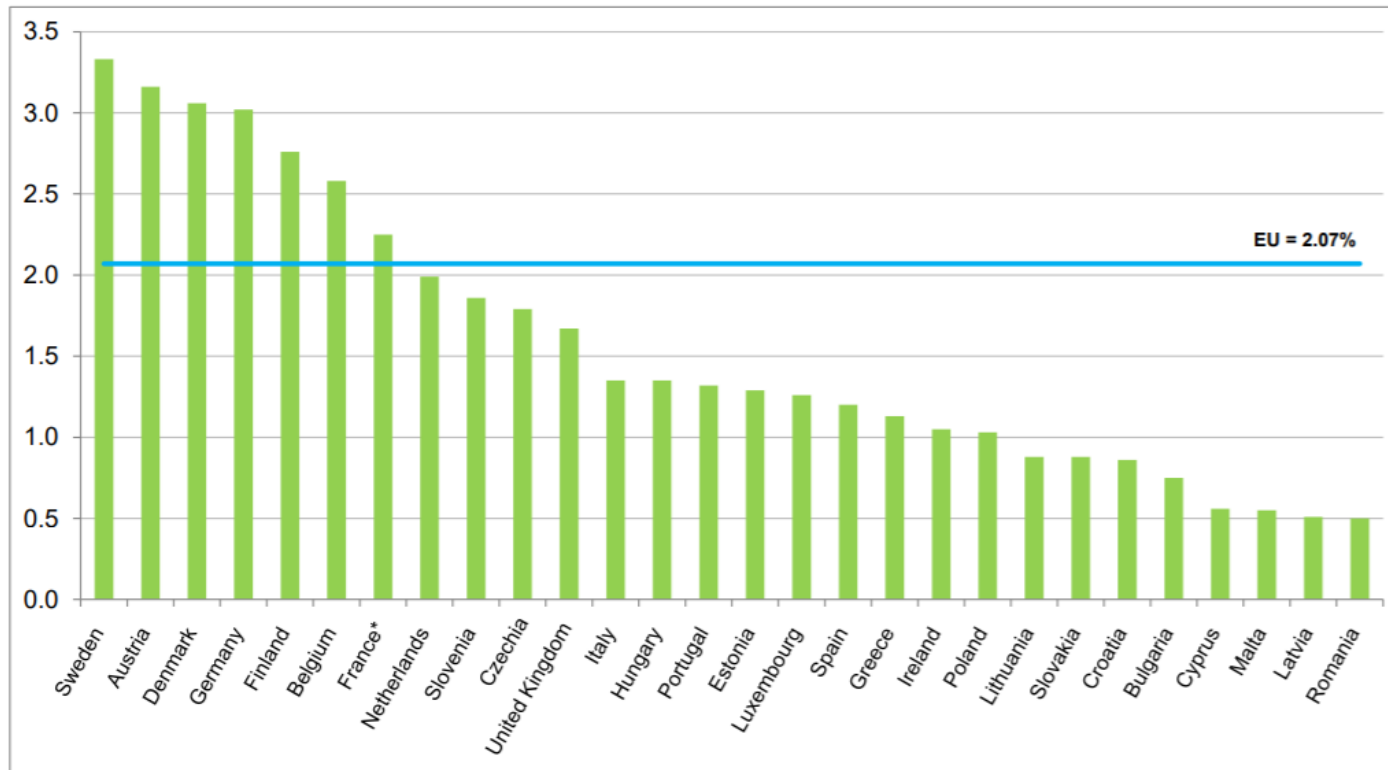
741 million people

512 million people (28)

1 economic and research zone

EU amongst top countries in absolute spending on R&D

R&D intensity in the EU Member States, 2017
(R&D expenditure as % of GDP)



* 2016 data instead of 2017

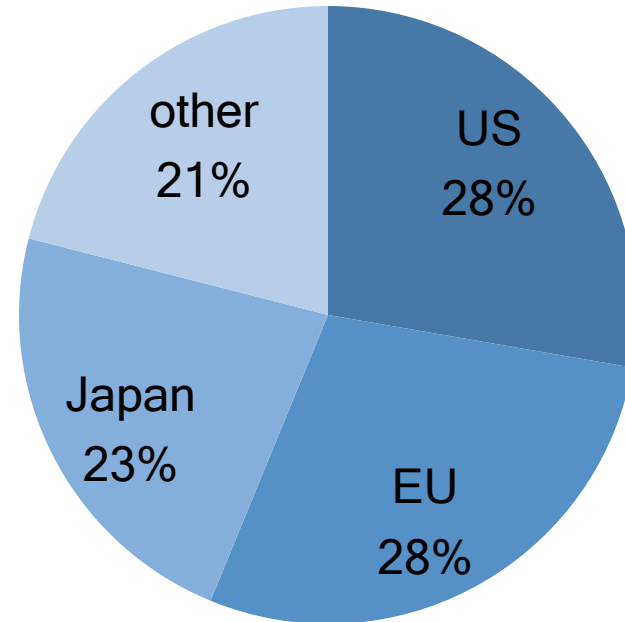
2017

EU – 2.07% of GDP

USA – 2.78 % of GDP

China – 2.12 % of GDP

Patents - From Lab to Market Place



A leading region for Entrepreneurship:

- 185 031 **Patent application** worldwide were filed under the PCT (Patent Cooperation Treaty) in 2012
- More than a quarter filed by individuals from European countries

Quality of Living City Ranking 2019

Evaluation based
on 39 factors including:

- political
- economical
- environmental
- personal safety
- health
- education
- transportation
- other public service factors

- 
- | | |
|---|--------------------------|
|  | 1. Vienna, Austria |
|  | 2. Zürich, Switzerland |
| | 3. Vancouver, Canada |
|  | 3. Munich, Germany |
| | 3. Auckland, New Zealand |
|  | 6. Düsseldorf, Germany |
|  | 7. Frankfurt, Germany |
|  | 8. Copenhagen, Denmark |
|  | 9. Geneva, Switzerland |
|  | 10. Basel, Switzerland |

1. Basics about Europe

2. ENRICH in Brazil



ENRICH is a global network of centres and hubs that promotes the internationalisation of science, technology and innovation.



CEBRABIC Consortium: 12 Partner Organisations (Brazil & Europe)

BALANCED INSTITUTIONAL DIVERSITY

- Companies (SPI, RCISD)
- Universities (UNICAMP, SU)
- Funding agencies (FFG)
- R&I organizations (FHG, DLR)
- Not-for-profit organisations (ANPEI, CONFAP, CNI, EBN, IASP)



EUROPEAN NETWORK OF RESEARCH AND INNOVATION CENTRES AND HUBS, BRAZIL
**BECOMING THE MAIN HUB & CONTACT POINT FOR EUROPEAN &
BRAZILIAN SCIENCE, TECHNOLOGY & INNOVATION ACTORS**

MISSION	VISION	OBJECTIVES
<p>We encourage & facilitate the <u>cooperation in research, technology and entrepreneurship between Europe and Brazil</u> by supporting and empowering all innovation actors (public& private) along the innovation (value) chain</p>	<p><u>In 2021, 'ENRICH in Brazil' will be a main hub & contact point for European and Brazilian Science, Technology and Innovation (STI) actors aiming at <u>bilateral cooperation</u></u></p>	<ul style="list-style-type: none">▪ Promotion of <u>excellence</u> in B&R&I▪ <u>Financial sustainability</u> of the Centre▪ Creation of a <u>win-win situation</u> for BR& EUin STI fields▪ <u>Connect</u> EUresearchers & entrepreneurs <u>in BRmarket</u>▪ Connect BRresearchers & entrepreneurs in <u>EUmarket</u>▪ Offer <u>Services</u> to BR& EU clients▪ <u>Integrate existing EU& BR initiatives</u>, projects and networks

**ENRICH Focal Point
in Europe (Brussels)**



18 April 2018

Main Office of ENRICH in Brazil
Edf. Armando Monteiro Neto,
St. Bancário Norte Q. 1 BL I –
Brasília DF
70040-010 Brazil



**ENRICH in Brazil
(Brasilia)**



29 November 2017

★ **Establish Non-Profit
Association as Legal Entity in
Brazil – June / July 2019**

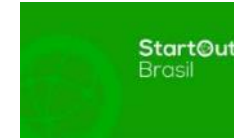
ENRICH Associates

„ENRICH Associates are part of the legal entity / structure of ENRICH in Brazil; to be associated with ENRICH allows to actively develop and steer the strategic direction of ENRICH.“

ENRICH Partners

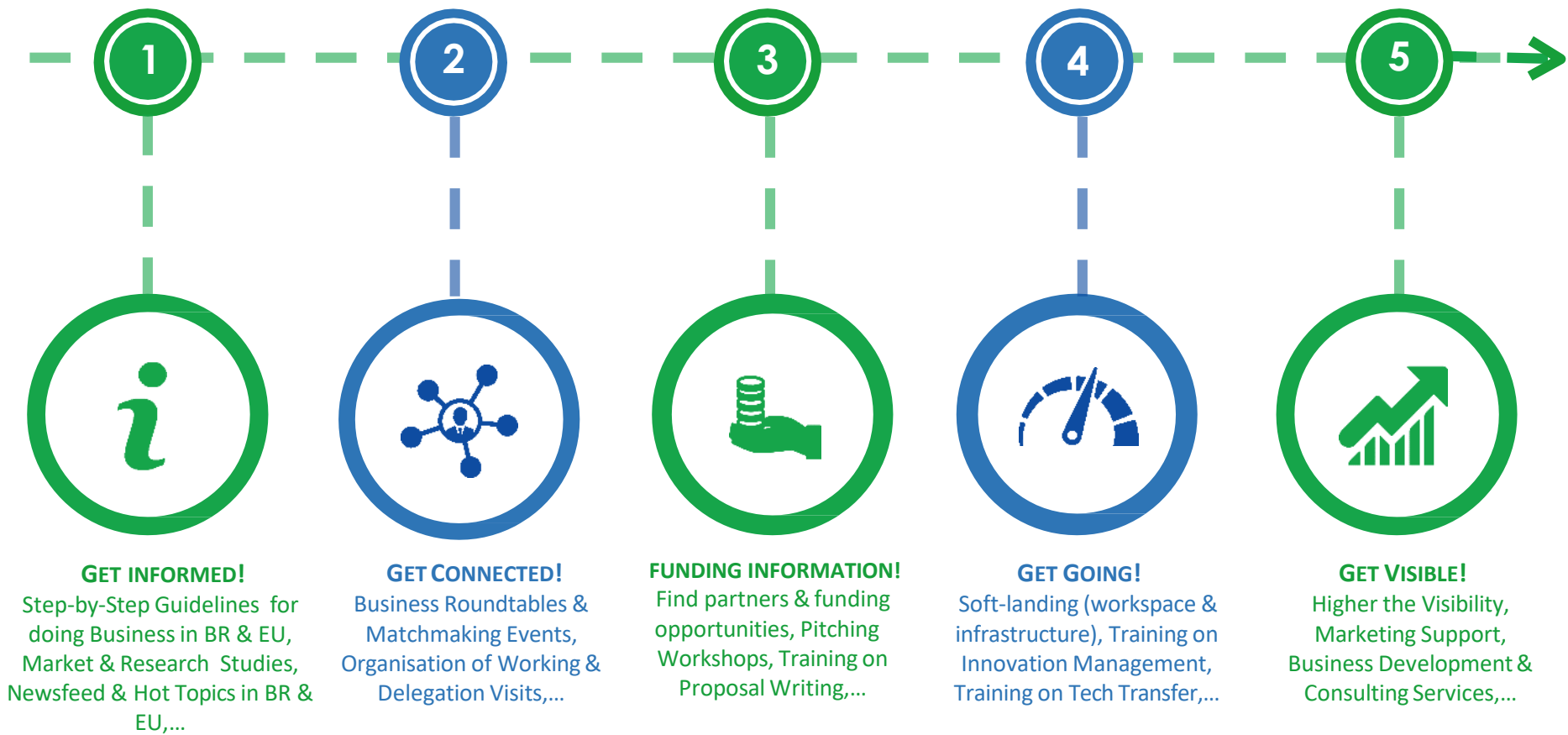
„ENRICH Partners support ENRICH in Brazil with their expertise and/or their network; Partnering with ENRICH creates mutual benefits.“

ENRICH in Brazil - Collaboration Partners (Selection)



Brazilian Technology Platform - BRAFIP





6 – GET ADVICE!

Legal support, IPR advice, RRI Toolbox, Patent Advice,...

Training



H2020 Proposal Writing Training
MSCA: Campinas & Porto Alegre (May 2018)
ERC: Rio de Janeiro (August 2018)

Boot Camp



Innovation Boot Camp in
Curitiba, Brazil (Sept 2018)
Malaga, Spain (Oct 2018)

Webinar



Webinars, e.g.:
Brazilian STI Landscape (June 2018)
European STI Landscape (Sep 2018)

Information Report




Facts & Figures: Get to know Brazil/
Europe and its Innovative Industry

Info Session



5 Key Steps to Approaching
International Markets & Pitching
Clinic (Luxembourg, June 2018)

Guideline



Um Guia Prático - Horizonte 2020

ENRICH in Brazil webinar series

European Science Technology and Innovation Landscape



FREE WEBINARS



Opportunities for Brazilian start-ups in Austria

29th May
15:30-16:30 CET | 10:30- 11:30 GMT-3

Both Austria and Brazil can boast vivid start-up ecosystems. In order to strengthen the cooperation between both countries, this webinar will present current opportunities in Austria for Brazilian start-ups, a Brazilian representative who recently used this opportunity will share his experience.



Science and technology landscape in Turkey

24th September
14:00-15:30 CET | 09:00-10:30 GMT-3

This webinar will provide information about the science and technology research and innovation landscape in Turkey. The main actors of the ST&I ecosystem, public policies to support ST&I activities, national funding, and the potential for international collaboration (especially with Brazil) will be presented.



Science, Technology and Innovation ecosystems in Spain

10th October
15:00-16:00 CET | 10:00-11:00 GMT-3

Presenting the Spanish science, technology and innovation landscape, this webinar will highlight the key innovation actors, public policies and emerging trends. The webinar will also explore the main synergies and potential for collaboration with Brazil.

Research and Innovation landscape in Hungary

27th November
14:00-15:00 CET | 10:00-11:00 GMT-3

Exploring the innovation environment in Hungary that promotes socio-political objectives, creates value and efficiently boosts long-term competitiveness. This webinar will examine synergies between EU and national funding, international cooperation possibilities.



Discover the land of ideas - The German Research and Innovation landscape

4th December
14:00-15:00 CET | 10:00-11:00 GMT-3

From the fuel cell to the MP3 player, German inventions have changed people's lives. At the same time, research and innovation (R&I) are what keep a successful economy going and Germany is one of the world's top investors in R&I. The webinar shows who is behind this: universities and research institutes, Federal and state institutions and companies committed to R&I. Enjoy discovering the German R&I landscape!



FOLLOW US!



For more information visit
www.brazil.enrichcentres.eu or contact us
brazil@enrichcentres.eu



ENRICH is an initiative of the European Union, executed in Brazil by the CEBRABIC project, that has received funding from the European Union's Horizon 2020 research and innovation programme under grant agreement No 733531. Responsibility for the information and views set out in this publication lies entirely with the authors.

ENRICH in Brazil

INNOVATION & MATCHMAKING

TOUR TO BRAZIL

23 – 27 September 2019

A unique networking opportunity for European organisations operating in the area of Bioeconomy, (Renewable) Energies and technologies applied to these sectors!

The ANPEI Conference 2019 is part of the programme - known as one of the main conferences in Brazil when it comes to Innovation!

JOIN THE TOUR!

Follow the link to save your spot: <https://bit.ly/2VAsmTh>



ENRICH is an initiative of the European Union, executed in Brazil by the CEBRABIC project that has received funding from the European Union's Horizon 2020 research and innovation programme under grant agreement No 733531. Responsibility for the information and the views set out in this publication lies entirely with the authors.



Bioeconomy, (renewable) Energy and the related ICT Sector - ENRICH in Brazil Matchmaking Tour Info Session



DATE & TIME: 4th July 2019, 15.00 -16.00 CET

REGISTRATION LINK: <https://bit.ly/2wz82qx>

Prior to our ENRICH in Brazil Matchmaking & Innovation Tour, a dedicated webinar will provide all information needed, before take-off to Brazil!

Tentative Agenda:

02 Min – ENRICH in Brazil: Welcome

10 Min – The Brazilian State Paraná: Facts & Figures about the state of the Iguaçu Waterfalls

10 Min – The state Paraná and its ICT Sector

10 Min - The state Paraná, its bioeconomy potential and the renewable energy sector

10 Min – Information about the ANPEI Conference @ Foz do Iguaçu

10 Min - ENRICH in Brazil Innovation & Matchmaking Tour: Overview & Practical Information

08 Min - Q & A

WEBINAR

ENRICH in Brazil
**INNOVATION & MATCHMAKING
TOUR TO BRAZIL**

23 – 27 September 2019

©wikicommons

How to involve?



- ✓ Become part of our Community!
- ✓ Stay tuned about our Activities via Social Channels & Newsletter subscription!



www.brazil.enrichcentres.eu



brazil@enrichcentres.eu



https://twitter.com/ENRICH_brazil



<https://www.facebook.com/ENRICHinBrazil>



<https://www.linkedin.com/company/11125511>

ENRICH in Brazil is made possible with the support
of the CEBRABIC project and its partners



Fraunhofer Institute for Production
Systems and Design Technology (IPK)

