



Webinar APEX – StartOut: Overview ENRICH in Brazil

Brazil, 23 August 2018

Dr. Markus Will

Fraunhofer IPK



ENRICH is an initiative of the European Union, executed in Brazil by the CEBRABIC project, that has received funding from the European Union's Horizon 2020 research and innovation programme under grant agreement No 733531. Responsibility for the information and views set out in this publication lies entirely with the authors.

www.brazil.enrichcentres.eu
brazil@enrichcentres.eu



CEBRABIC Project establishes 'ENRICH in Brazil'



Horizon 2020:

Eng-Globally-9-2016, Centres/Networks of European Research and Innovation:

Establish strategic Partnerships in Science, Technology and Innovation (STI) with selected key countries: China, USA, Brazil (Pilots)

Main Objectives of CEBRABIC:

- Encouraging cooperation among European and Brazilian Research, Innovation and Business (R&I&B) organizations
- Establish and deploy a self sustainable Centre for Europe-Brazil Business & Innovation Cooperation within 48 month

Project duration: 01/2017 – 12/2020

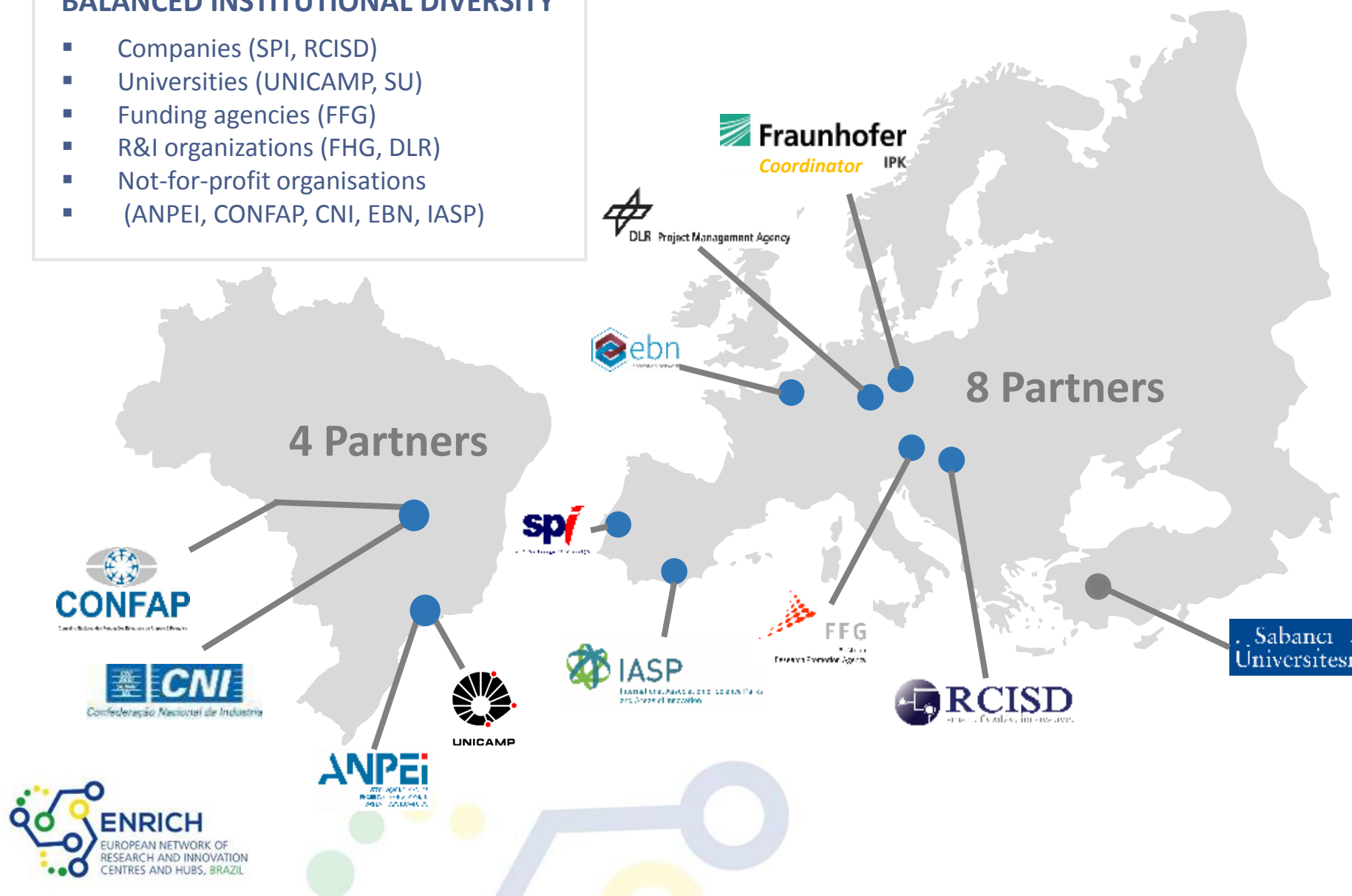


Who
we are!

CEBRABIC Consortium: 12 Partner Organisations (Brazil & Europe)

BALANCED INSTITUTIONAL DIVERSITY

- Companies (SPI, RCISD)
- Universities (UNICAMP, SU)
- Funding agencies (FFG)
- R&I organizations (FHG, DLR)
- Not-for-profit organisations (ANPEI, CONFAP, CNI, EBN, IASP)



ENRICH in Brazil: Our Promise to the Market!

EUROPEAN NETWORK OF RESEARCH AND INNOVATION CENTRES AND HUBS, BRAZIL BECOMING THE MAIN HUB & CONTACT POINT FOR EUROPEAN & BRAZILIAN SCIENCE, TECHNOLOGY & INNOVATION ACTORS

MISSION	VISION	OBJECTIVES
<p>We encourage & facilitate the cooperation in research, technology and entrepreneurship between Europe and Brazil by supporting and empowering all innovation actors (public & private) along the innovation (value) chain</p>	<p>In 2021, 'ENRICH in Brazil' will be a main hub & contact point for European and Brazilian Science, Technology and Innovation (STI) actors aiming at bilateral cooperation</p>	<ul style="list-style-type: none"> ▪ Promotion of excellence in B&R&I ▪ Financial sustainability of the Centre ▪ Creation of a win-win situation for BR & EU in STI fields ▪ Connect EU researchers & entrepreneurs in BR market ▪ Connect BR researchers & entrepreneurs in EU market ▪ Offer Services to BR & EU clients ▪ Integrate existing EU & BR initiatives, projects and networks

For
whom?!

Clients – Beneficiaries - Stakeholder

RESEARCH ACTORS

- ❖ Universities
- ❖ Research Institutes
- ❖ University Associations
- ❖ Research Networks

INNOVATION ACTORS

- ❖ Scientific Parks
- ❖ Incubators
- ❖ Accelerators
- ❖ Funding Agencies

BUSINESS ACTORS

- ❖ Companies
- ❖ Start-ups, SMEs
- ❖ Business Networks
- ❖ Clusters

Service Portfolio & Customer Value



ENRICH in Brazil: Examples of Events and Partnerships 2018



STARTOUT BRASIL, BERLIN (MAY 18)



SMARTPOLIS, BUDAPEST (MAY 18)



INCOBRA INFODAY, BELÉM (JUNE 18)



DANUBE REGION STRATEGY - XIV PA7
STEERING GROUP MEETING, BRATISLAVA (JUNE
2018)

How to involve?



- ✓ **Become part of our Community: Application for Service Provider & SLH via Website!**
- ✓ **Test our Services as ,free-of-charge' in 2018**
- ✓ **Stay tuned about our Activities via Social Channels & Newsletter Subscription**



www.brazil.enrichcentres.eu



brazil@enrichcentres.eu



https://twitter.com/ENRICH_brazil



<https://www.facebook.com/ENRICHinBrazil>



<https://www.linkedin.com/company/11125511>

ENRICH in Brazil is made possible with the support
of the CEBRABIC project and its partners



Fraunhofer Institute for Production
Systems and Design Technology (IPK)





ENRICH in Brazil

How can we help you?

Chiara Davalli, European Business and Innovation Centre Network (EBN)

www.ebn.eu | @EUBIC

Chiara.Davalli@ebn.eu | @ChiaraDavalli



ENRICH is an initiative of the European Union, executed in Brazil by the CEBRABIC project, that has received funding from the European Union's Horizon 2020 research and innovation programme under grant agreement No 733531. Responsibility for the information and views set out in this publication lies entirely with the authors.

www.brazil.enrichcentres.eu
brazil@enrichcentres.eu



- ENRICH in Brazil Services
- ENRICH in Brazil Community

Let's start!

HOW CAN WE
HELP YOU?

SERVICE PORTFOLIO - SERVICES 2018

Piloting Services at the Market as Free-of-charge



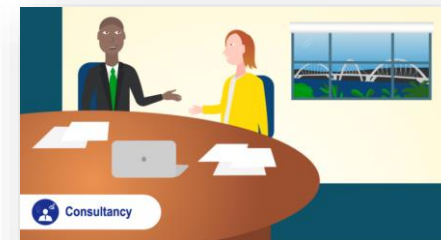
- **Guideline for Brazilians to participate in H2020 (PT)**
May 2018 (download)
- **Step-by-Step Guideline to start Business in Brazil (EN)**
May 2018 (download)
- **Guideline for Innovation Funding Possibilities in Brazil**
Sept 2018 (download)
- **Analysis on Industry Demand in Brazil (Focus: I4.0)**
Nov 2018 (download)
- **Step-by-Step Guideline to start Business in Europe (PT & EN)**
Nov 2018 (download)
- **Guideline for Innovation Funding Possibilities in Europe**
Dec 2018 (download)
- **Series of Webinars: Showcase the Brazilian Innovation Ecosystem**
August – November 2018 (4x - online)



- **How to write a proposal?**
Focusing on MSC Actions
Campinas, Brazil, 3 May 2018
Porto Alegre, 8 May 2018
- **How to write a proposal?**
Focusing on ERC
Brazil, July 2018
- **Webinars on R&I strategy, programs and initiatives in Brazil & Europe**
for Brazil, June 2018 (online)
for Europeans, Sept 2018 (online)
- **Boot Camp Training**
Malaga, Spain , October 2018
Curitiba, Brazil 21-22 Sept 2018
- **Training on Impact of R&I programmes**
Campinas, Brazil, November 2018
- **Training on Innovation Management**
Webinar, October 2018



- **Exhibition Showcase**
Gramado, Brazil, June 2018
- **Road Show as „Fact Finding Mission“**
Europe, Sept/Oct 2018
- **Grow your Business Internationally**
EBN Congress, Luxemburg, 6-8 June 2018
- **Matchmaking Innovation Tour**
Europeans to Brazil
November 2018



On-demand

- **Customized Consultancy Services**
- **Customized support on partner & project search & funding opportunities**
- **Advice on RRI**

Examples of ENRICH in Brazil Services Provided in 2018

Training



Info Session



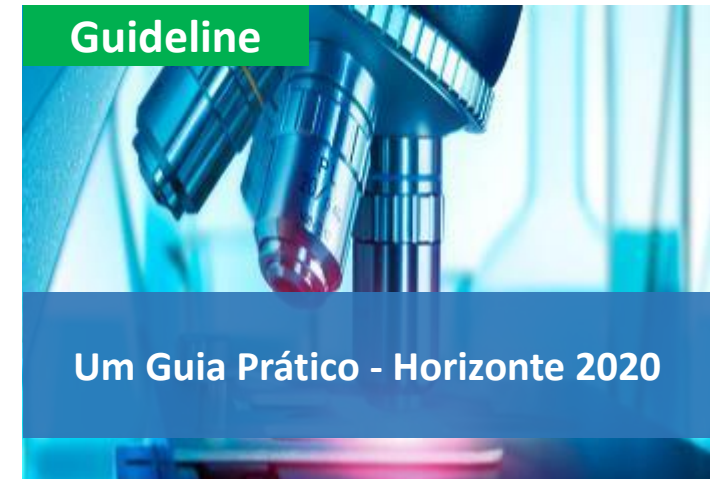
Webinar



Information Report



Guideline



ENRICH in Brazil Service Portfolio

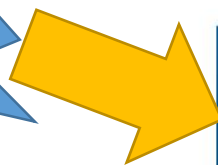


HOME ABOUT **SERVICE PORTFOLIO** NEWS & EVENTS USEFUL INFORMATION COMMUNITY



European Network of Research and Innovation Centres and Hubs (ENRICH)

Latest updates !



ENRICH in Brazil encourages & facilitates the cooperation in Research, Technology and Entrepreneurship between Europe and Brazil by supporting and empowering the Innovation Actors!

SERVICE PORTFOLIO



GET INFORMED



GET CONNECTED



GET FUNDED



GET ADVICE



GET VISIBLE



GET GOING

[READ MORE ABOUT OUR SERVICES](#)



[Download our Service Catalogue 2018](#)



Webinar Series: Showcase the Brazilian Innovation Ecosystem, focus on Applied Research Sector

Showcase of the Brazilian Innovation Ecosystem with focus on the Applied Research sector; Four different technology fields (Chemical...



Webinar on R&I strategy, programmes and initiatives in Europe

EU STI strategy, programmes, opportunities, networks, institutions and initiatives

**13/09/2018
register now!**



Step-by-Step Guideline to start Business in Europe

Basic information for Brazilians to start Business in Europe!

Winter 2018



Facts & Figures: Get to know Brazil and its Innovative Industries

Basic information for Europeans to start business in Brazil!



Analysis on Industry Demand in Brazil

Global Survey on Digital Transformation, focussed on Industry 4.0!



Guideline for Innovation Funding Possibilities in Europe

Focus on funds, focused in internationalization – both at European, regional, and national levels!

- Information on Funding Possibilities (Brazil and Europe)
- Market & Research Study
- Step-by-Step Guidelines to start Business in Brazil & Europe
- Webinars and Trainings about Brazilian and European STI landscape & framework conditions
- Information about H2020 and Co-Funding Mechanism
- Customized Market Analysis (on demand)



Guideline for Innovation Funding Possibilities in Brazil

Information on various public innovation funding programmes/instruments in Brazil accessible for Europeans!



Guideline for H2020

Practice-oriented tool to Brazilians to be involved in H2020!

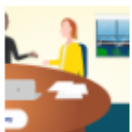
Download it here!





Innovation Tour to Brazil

An InnovationTour will be organized for the representatives of European companies (including startups) competence centres, science and techn...



Organisation of Working Visits and Events

Get access to relevant partners in Brazil & Europe! Contact Us!

On demand!



INNOVATION TOUR
A unique networking opportunity for European researchers and organizations with technology focus!

ENRICH in Brazil is announcing its Innovation Tour!
5 - 9 November 2018

Focus Topics: Bioeconomy & Biotechnology, Nanotechnology & Material Science, (Renewable) Energy

- Identification and Dissemination of **Events & Fairs** in Brazil and Europe
- Organisation of **Business Roundtables** to identify synergies
- **Matchmaking Tours** to Brazil and Europe
- Customized Organisation of **Working & Delegation Visits and Events** (on demand)



Road Show as “Fact Finding Mission”

Road shows will be organized back-to-back to relevant bigger events in Brazil and Europe. The objective is to raise awareness and provide in...



Customized Support on Partner, Project Search & Funding Opportunities

Get in contact with us to get individual support!



Training on H2020: How to write successful proposals? (ERC)

FREE-OF-CHARGE TRAINING: Overview of H2020, Partner & Project Search, Proposal Writing, and many more!



Training on H2020: How to write successful proposals? (MSC Action)

FREE-OF-CHARGE TRAINING: Overview of H2020, Partner & Project Search, Proposal Writing, and many more!

On demand!



- Training on H2020 incl. 'How to successfully participate in H2020?', 'Project & Grant Management', 'How to write a proposal for H2020?'
- Road Shows as "Fact Finding Mission"
- Pitching Workshops and Training for Pitching ('Pitching Clinic') towards Investors
- Customized Support on Partner & Project Search (on demand)
- Customized Support and Information on Funding Opportunities (on demand)

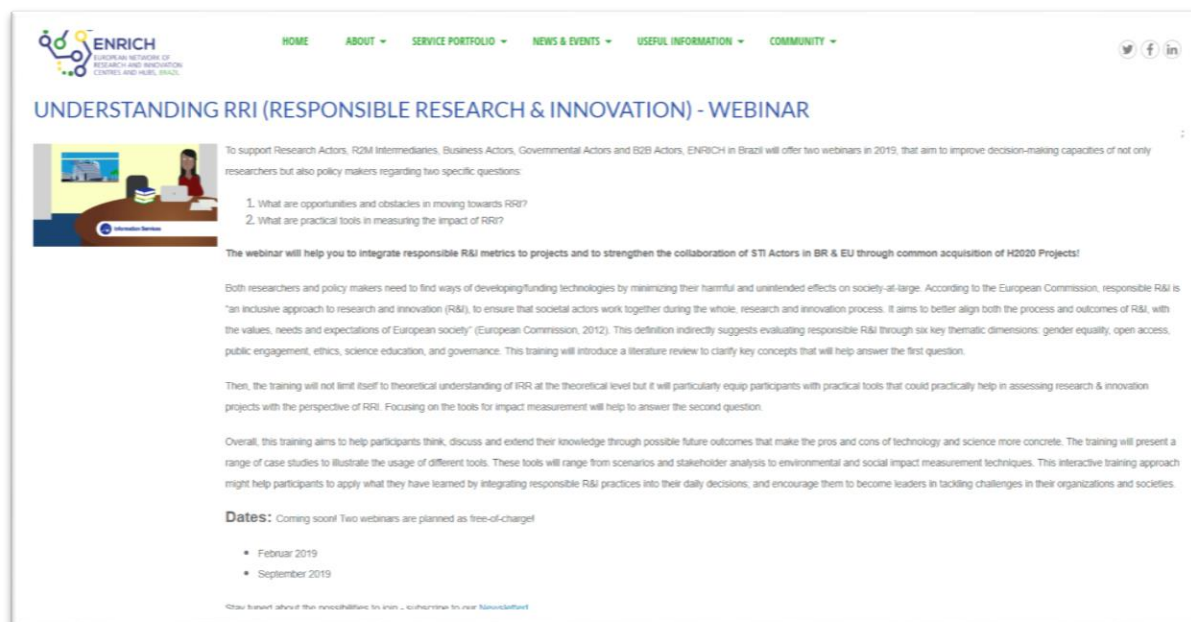
Advice on Responsible Research & Innovation (RRI)
Empowerment on R&I main concepts, toolkit and Trends!

On demand!

Understanding RRI (Responsible Research & Innovation) - Webinar

To support Research Actors, R2M Intermediaries, Business Actors, Governmental Actors and B2B Actors,

Feb & Sep 2019



ENRICH
EUROPEAN NETWORK OF
RESEARCH AND INNOVATION
CENTRES AND HUBS, BRAZIL

HOME ABOUT SERVICE PORTFOLIO NEWS & EVENTS USEFUL INFORMATION COMMUNITY

UNDERSTANDING RRI (RESPONSIBLE RESEARCH & INNOVATION) - WEBINAR

To support Research Actors, R2M Intermediaries, Business Actors, Governmental Actors and B2B Actors, ENRICH in Brazil will offer two webinars in 2019, that aim to improve decision-making capacities of not only researchers but also policy makers regarding two specific questions:

1. What are opportunities and obstacles in moving towards RRI?
2. What are practical tools in measuring the impact of RRI?

The webinar will help you to integrate responsible R&I metrics to projects and to strengthen the collaboration of STI Actors in BR & EU through common acquisition of H2020 Projects!

Both researchers and policy makers need to find ways of developing/funding technologies by minimizing their harmful and unintended effects on society-at-large. According to the European Commission, responsible R&I is "an inclusive approach to research and innovation (R&I), to ensure that societal actors work together during the whole, research and innovation process. It aims to better align both the process and outcomes of R&I, with the values, needs and expectations of European society" (European Commission, 2012). This definition indirectly suggests evaluating responsible R&I through six key thematic dimensions: gender equality, open access, public engagement, ethics, science education, and governance. This training will introduce a literature review to clarify key concepts that will help answer the first question.

Then, the training will not limit itself to theoretical understanding of RRI at the theoretical level but it will particularly equip participants with practical tools that could practically help in assessing research & innovation projects with the perspective of RRI. Focusing on the tools for impact measurement will help to answer the second question.

Overall, this training aims to help participants think, discuss and extend their knowledge through possible future outcomes that make the pros and cons of technology and science more concrete. The training will present a range of case studies to illustrate the usage of different tools. These tools will range from scenarios and stakeholder analysis to environmental and social impact measurement techniques. This interactive training approach might help participants to apply what they have learned by integrating responsible R&I practices into their daily decisions, and encourage them to become leaders in tackling challenges in their organizations and societies.

Dates: Coming soon! Two webinars are planned as free-of-charge!

- Februar 2019
- September 2019

Stay tuned about the possibilities to join - subscribe to our Newsletter!



- Training on IPR ('Intellectual Property Rights)
- Customized Guidelines on legal issues in Brazil and Europe (on demand)
- Customized Legal Advices (on demand)
- Advice to Responsible Research & Innovation (RRI)



Innovation Boot Camp in Europe

REGISTRATION is open for our first Innovation Bootcamp in Europe! See here for more details! The boot camp aims to ...



Customized Support

Get tailor-made support and advices in various topics!



Exhibition Showcase

Identify challenges and opportunities!



Boot Camp in Brazil

Get prepared for your Business!

21-22/09/2018
Curitiba > register now!

- **Boot Camp as Preparation Training** (in Brazil and in Europe)
- **Organisation of Joint Events and Exhibitions**
- **Customized advices on Branding, Communication, Investments, Business Model & Marketing Strategy** (on demand)



Date:

20 September 2018 to 21 September 2018



Venue:

Curitiba, Brazil

Innovation Bootcamp in Brazil

The purpose of the bootcamp is to show to Startups, Researchers and Corporates what are the opportunities and good practices for getting access to relevant business, partnership and funding in the EU, with the support of ENRICH. Additionally, the bootcamp will also include an information and feedback sessions on ENRICH portfolio and opportunities for Startups, Researchers and Corporates, in Brazil and in Europe.

The target audience will be around 50-70 individuals, from three main segments of clients for ENRICH: startup owners, researchers and university representatives, and corporates. Other innovation ecosystem activists and members will also be invited. The main target will be to create awareness on Enrich, its services and products, the actors of the Brazilian and European Innovation Ecosystems, financing instruments and IP in Brazil and the EU, and collaboration and business opportunities.





Understanding RRI (Responsible Research & Innovation) - Webinar

To support Research Actors, R2M Intermediaries, Business Actors, Governmental Actors and B2B Actors, ENRICH in Brazil will offer two we...



Trainings on Impact of R&I Programmes

Get an Overview of the main concepts, methodologies and trends on impact of R&I programmes!



Training on Innovation Management

Extend your knowledge on Innovation Management!



Training on Technology Transfer

Get a complete vision of inter-organizational cooperation focusing on research, development and innovation!



Workspace & Secondment Opportunities

Coming soon & available at our Website!



Training on Communication Strategies

Understanding and practicing communication techniques, with specific attention on how to address a new (international) market.

21-23/11/2018
Campinas

11/10/2018 > online

On demand!



- Training on Tech-Transfer
- Training on Innovation Management
- Training on Impact of R&I Programs
- Training on Communication (Basic and Advanced)
- Workspace and Secondment

To recap > ENRICH in Brazil Services 2nd Semester 2018!

	Fall 2018	Secondment Opportunities in Brazil & Europe (Exchange Database)
	Sept – Dec 2018	Webinar Series: Showcasing the Brazilian Applied Research Area
	21-22 Sep 2018 29-30 Oct 2018	Boot Camp in Brazil (Curitiba, Brazil) Boot Camp in Europe (Malaga, Spain)
	11 Oct 2018	Training on Innovation Management (online-based)
	5-9 Nov 2018	Innovation Tour to Brazil
	21- 23 Nov 2018	Training on Impact of R&I programmes (Campinas, Brazil)
	Dec 2018	Analysis on Industry Demand in Brazil, China, USA (Industry 4.0)



ENRICH in Brazil Community

Brazil & Europe



ENRICH in Brazil COMMUNITY



HOME

ABOUT ▾

SERVICE PORTFOLIO ▾

NEWS & EVENTS ▾

USEFUL INFORMATION ▾

COMMUNITY ▾



JOIN OUR COMMUNITY



Discover the benefits and membership conditions for each category and chose your role in the ENRICH in Brazil community.

If your organization is located in Brazil and/or Europe and offers services in the area of STI (Science, Technology and Innovation) in both or one of the two markets (BR & EU) you might **become a Service Provider**

Become a
Service Provider

If on top of STI services, you also deliver soft-landing and incubation services you might **become a Soft Landing Hub**

Become a
Soft Landing Hub

If you are a European or Brazilian governmental body, association or publicly funded initiative pursuing stronger EU-Brazil cooperation, you might be interested to **become an Ambassador**

Become an
Ambassador

If you are looking for support services to internationalise to Brazil or Europe you might **become a Service User**

Become a
Service User
COMING SOON

BE ENRICH : Service Providers & Soft Landing Hubs

The Service Portfolio of ENRICH in Brazil will be executed by ENRICH Community Members and the Centre itself.

- Service Providers are organisations that are located in Brazil and/or Europe, which offer services in the area of STI in both or one of the two markets (BR & EU).
- Among ENRICH Service Providers, only the certified organisations (Soft Landing Hubs) will deliver soft-landing and incubation services on ENRICH in Brazil behalf.
- Organizations interested in becoming Soft Landing Hubs have to first subscribe as Service Providers and then enter an accreditation and certification process.



www.brazil.enrichcentres.eu | brazil@enrichcentres.eu

CHAMADA

BE ENRICH

PROVEDORES DE SERVIÇO & POLOS DE SOFT LANDING

[Você quer se juntar à Comunidade ENRICH?](#)

Candidate-se AGORA para ser um [provedor de serviços](#) ou um [polo de soft landing](#)!



GRÁTIS EM 2018
(taxas de adesão serão cobradas a partir de 2019)



BENEFÍCIOS

Fará parte da comunidade ENRICH e de um **networking bilateral ativo** em CTI.

Obterá uma **exposição de mercado** no cenário brasileiro e europeu de CTI.

Branding de alta qualidade: ser um prestador de serviços ENRICH transmite que a organização atendeu aos altos padrões de qualidade estabelecidos ENRICH.

Certificação de Suporte à Inovação (para os Polos de Soft Landing), fornecendo um selo de qualidade confiável, reconhecendo as organizações brasileiras de apoio à ciência e tecnologia, P&D&I, como parceiros confiáveis para suas contrapartidas europeias.

Você está interessado em oferecer...

- ⇒ Serviços de treinamento
- ⇒ Serviços de consultoria
- ⇒ Serviços de informação
- ⇒ Matchmaking & Eventos



- ⇒ Guia de localização
- ⇒ Oferta de espaço de coworking
- ⇒ Apoio administrativo
- ⇒ Análise de conformidade sobre as leis e regulamentos relacionadas a P&D&I
- ⇒ Introdução à comunidade local científica e empresarial

Service Provider

Provedor de Serviços do ENRICH: Organizações que estão localizadas no Brasil e/ou Europa, que oferecem serviços na área de CTI (Ciência, Tecnologia e Inovação) em ambos ou em um dos mercados (Brasil e Europa).

[Candidate-se AGORA](#)

Soft Landing Hub

Os Polos de Soft Landing do ENRICH (provedores de serviço especializados): centros certificados capazes de promover um conjunto abrangente de serviços relacionados à inovação, permitindo que agentes de Ciência e Tecnologia e de Desenvolvimento de Pesquisa e Inovação (pesquisadores, corporações, pequenas e médias empresas e etc.) desenvolvam parcerias de longo prazo no Brasil e na Europa.

[Candidate-se AGORA](#)

More details and terms & conditions available at: www.brazil.enrichcentres.eu



The CEBRABIC project has received funding from the European Union's Horizon 2020 research and innovation programme under grant agreement No 733531. Responsibility for the information and views set out in this document lies entirely with the authors.

SUPPORT ENRICH : Ambassadors

- Ambassadors of ENRICH in Brazil are **strategic partners and alliances with recognized European and Brazilian bodies and initiatives**. These partnerships contribute to the mutualisation of ENRICH assets (expertise, geographical coverage, key intermediary role etc.).
- ENRICH Ambassadors are **both European and Brazilian actors interested in engaging with ENRICH in Brazil**, as they see synergies and mutual benefits in promoting ENRICH services and activities to their networks.
- ENRICH Ambassadors will participate in the ENRICH Community on a **free of charge basis, by establishing formal partnerships** (MoU or Partnership agreement).

**BECOME AN
AMBASSADOR**

For whom?	<ul style="list-style-type: none">✓ Governmental Actors (Brazil and Europe)✓ Existing and ongoing European or Brazilian funded Project or Initiative
Benefits	<ul style="list-style-type: none">✓ Co-organisation of (thematic) events and info-session✓ Networking✓ Exchange of information and services✓ Mutual visibility✓ Access to EU-BR cooperation opportunities

JOIN ENRICH : Service Users

Organisations

SME; Corporations; NGOs; Sole Trader Enterprises; CCI; Agencies; Universities; Research Centres etc.

Individuals

Any person, from any organisation, interested in ENRICH services in Brazil and EU and the overall ENRICH initiative

- Bundled Information & Relevant Knowledge
- Empowerment - Competencies & Capabilities
- Establish trustful Relations between R&I&B Actors
- Get customized Advice & Consulting
- Join network
- Contacts
- Internationalisation opportunities
- STI News from European and Brazilian markets
- Never be late from opportunities
- One-click get in touch with ENRICH in Brazil
- No repeated fill-out forms

They are the end users of the ENRICH services and will pay per service received from the ENRICH Service Portfolio. ENRICH in Brazil will offer them "service packages", either standard or tailored at ENRICH standard prices.

Services are offered free-of-charge in 2018.

FEATURE not available on the website as we are building the server. In the meantime you can:

Subscribe to our newsletter and apply directly for the service you are interested in



JOIN ENRICH : Sponsors

- **Sponsors** could be customers or other Components of the ENRICH in Brazil community, who want to use ENRICH in Brazil's services and activities with an objective of **brand exposure**.
- Developing and offering sponsorship packages promotes their involvement and creates a **cost-efficient win-win situation**.
- The **packages** can vary in the level of exposure provision and be ranked as bronze, silver and gold.
- **WE ARE HAPPY TO DISCUSS YOUR SPONSORSHIP PACKAGE WITH YOU!**



How to involve?

- **Become part of our Community: Roll-out in June/July 2018**
- **Test our Services as ,free-of-charge‘ in 2018; Registration via our Website**
- **Stay tuned about our Activities via Social Channels & Newsletter Subscription**



www.brazil.enrichcentres.eu

brazil@enrichcentres.eu

https://twitter.com/ENRICH_brazil

Follow Us!

<https://www.facebook.com/ENRICHinBrazil>

<https://www.linkedin.com/company/11125511>



ENRICH in Brazil is made possible with the support
of the CEBRABIC project and its partners



Fraunhofer Institute for Production
Systems and Design Technology (IPK)





ENRICH in Brazil

Oportunidades de parceria entre Brasil e Europa através do H2020

Ana Carolina Gomes

Sociedade Portuguesa de Inovação



ENRICH is an initiative of the European Union, executed in Brazil by the CEBRABIC project, that has received funding from the European Union's Horizon 2020 research and innovation programme under grant agreement No 733531. Responsibility for the information and views set out in this publication lies entirely with the authors.

www.brazil.enrichcentres.eu
brazil@enrichcentres.eu
brazil@eucentres.eu



01.

Horizonte 2020 – Visão
Geral do Programa

02.

Condições de
participação e
financiamento para o
Brasil

Entenda o H2020

O **Horizonte 2020** (H2020) é o maior programa de pesquisa e inovação da União Europeia (UE). O programa propõe fomentar avanços, descobertas e resultados mundiais, levando ideias do laboratório ao mercado. A meta final do H2020 é **impulsar o emprego e o crescimento e criar uma melhor qualidade de vida na Europa.**

O H2020 coloca o investimento em pesquisa e inovação no centro da estratégia europeia para um crescimento inteligente, sustentável e inclusivo. Aproximadamente 80 bilhões de euros de financiamento estão disponíveis ao longo de sete anos (2014 – 2020).

O H2020 é o instrumento financeiro que implementa a iniciativa Europa 2020, destinada a assegurar a competitividade global da Europa.

O programa de financiamento europeu está aberto à participação de empresas, instituições e pesquisadores de todos os países do mundo, incluindo o Brasil.



Entenda o H2020

O H2020 teve início em 2014 e terá duração de 7 anos. O programa quadro de financiamento à pesquisa e inovação europeu tem uma estrutura complexa, estruturado em pilares e objetivos específicos que, por conseguinte são apoiados por instrumentos de implementação:





Pilares

Três grandes pilares (prioridades:



Pilares



P1. Excelência em ciência

Pretende consolidar o Espaço Europeu de Pesquisa (ERA) e fortalecer o sistema de pesquisa e inovação europeu. As atividades deste pilar buscam reforçar a excelência da UE ao apoiar talentos e empresas inovadoras impulsionando competitividade, criando empregos e contribuindo com um nível de vida mais elevado. Os objetivos e mecanismos no âmbito deste pilar são:

- Pesquisa de ponta financiada pelo **Centro Europeu de Pesquisa (ERC)**;
- Treinamento inovador e de excelência, carreiras atrativas e oportunidades de compartilhamento de experiências e conhecimento por meio das **Ações Marie Skłodowska-Curie**;
- Colaboração científica entre disciplinas e fronteiras para o desenvolvimento das mais promissoras áreas emergentes por meio de **Tecnologias Futuras e Emergentes**;
- Financiamento para a aquisição de equipamentos e fortalecimento das **Infraestruturas de Pesquisa e inovação**.

Pilares



P2. Liderança Industrial

Este pilar visa acelerar o desenvolvimento tecnológico e inovador no setor privado. O principal objetivo é incentivar as empresas europeias a investirem mais em pesquisa e a atingirem áreas onde é possível a colaboração com o setor público e, assim, impulsionarem a inovação. Cada € 1 investido pela UE gera cerca de € 13 em valor agregado para negócios.

Para a UE, liderança industrial consiste em três objetivos:

- **Liderança em tecnologias facilitadoras e industriais** ao estimular o desenvolvimento de tecnologias facilitadoras necessárias para consolidar a inovação em todos os setores;
- Empréstimos e investimentos em Pequenas e Médias Empresas (PME) e pequenas sociedades de média capitalização inovadoras por meio de **acesso a capital de risco**;
- **Inovação em PMEs** ao permitir apoio personalizado para estimular inovação garantir crescimento e fomentar internacionalização.

Não permitem participação de países terceiros, incluindo o Brasil.

Pilares



P3. Desafios Societais

A UE identificou sete desafios prioritários para focar o investimento em pesquisa e inovação e garantir impacto real em benefício da sociedade:

Segurança alimentar, agricultura e silvicultura sustentável, pesquisa marinha, marítima e de águas interiores, e bioeconomia

Ação climática, eficiência na utilização de recursos e matérias-primas

Transportes inteligentes, ecológicos e integrados

Sociedades inclusivas, inovadoras e reflexivas

Sociedades seguras

Energia segura, não poluente e eficiente

Saúde, alterações demográficas e bem-estar

Programas de Trabalho

As oportunidades de financiamento no âmbito do Horizonte 2020 são definidas nos **Programas de Trabalho plurianuais**, que cobrem a grande maioria dos apoios disponíveis.

Os Programas de Trabalho:

- ➡ são organizados por área temática.
- ➡ são elaborados pela Comissão Europeia através de um processo de programação estratégica, que integra os objetivos políticos da UE.
- ➡ trazem informação sobre todas as chamadas e tópicos que serão financiados nos próximos anos.

Informações sobre as chamadas e os tópicos estão disponíveis no Programa de Trabalho antes mesmo da data oficial do lançamento



Programas de Trabalho

Excellent Science

[Future and Emerging Technologies,](#)

[Research Infrastructures, including e-
Infrastructures](#)

Leadership in Enabling and Industrial Technologies

[Nanotechnologies, Advanced Materials,
Biotechnology, and Advanced Manufacturing and
Processing \(NMBP\),](#)

[Information and Communication Technologies,](#)

[Innovation in SMEs](#)

[Access to Risk Finance](#)

Societal Challenges

[Societal Challenge 1,](#) (Health, demographic change and wellbeing)

[Societal Challenge 2,](#) (Food Security, Sustainable Agriculture and Forestry, Marine, Maritime and Inland Water Research and the Bioeconomy)

[Societal Challenge 3,](#) (Secure, clean and efficient energy)

[Societal Challenge 4,](#) (Smart, Green and Integrated Transport)

[Societal Challenge 5,](#) (Climate Action, Environment, Resource Efficiency and Raw Materials)

[Societal Challenge 6,](#) Europe in a changing world - inclusive, innovative and reflective societies

[Societal Challenge 7,](#) Secure societies - protecting freedom and security of Europe and its citizens.

[Science with and for society](#)

[Spreading Excellence and Widening Participation](#)

Chamadas

- **As chamadas do H2020 são apresentadas por grandes áreas temáticas inseridas nos Programas de Trabalho, lançados de 2 em 2 anos. Cada chamada está dividida em diferentes tópicos.**
- **Ao inserir uma página de chamada no Portal do Participante, a lista de todos os tópicos que pertencem a esta chamada fica disponível.**
- **Os tópicos dentro das chamadas informam o orçamento previsto e as datas de submissão da proposta que pode ser estruturado em diferentes estágios:**

❑ **Tópicos de 1 fase**

Para a maioria dos tópicos, uma proposta completa deve ser enviada no prazo estabelecido.

❑ **Tópicos em 2 fases**

Alguns tópicos têm um procedimento de apresentação em 2 fases: 1) estrutura e 2) proposta completa.

Tópicos

Os Tópicos são temas específicos dentro de uma área e delineiam a ação esperada contando as seguintes informações:

Specific Challenge

- Apresenta o contexto, o problema a resolver

Scope

- Especifica o foco e a intervenção necessária.

Expected impact

- Descreve os impactos e resultados que a ação deve atingir

Type of Action

- Apresenta os tipos da ação que a serem implementadas no âmbito de um tópico.

Tópicos H2020 de interesse para o Brasil

Ação Climática	LC-CLA-06-2019	Inter-relations between climate change, biodiversity and ecosystem services	19 de Fevereiro de 2019 04 de Setembro de 2019
Espaço	DT-SPACE-06-EO-2019	International Cooperation Copernicus – Designing EO downstream applications with international partners	12 de Março de 2019
	DT-SPACE-06-EO-2019	International Cooperation Copernicus – Designing EO downstream applications with international partners	12 de Março de 2019
	SU-SPACE-22-SEC-2019	Space Weather	12 de Março de 2019
Migrações	MIGRATION-08-2019	International protection of refugees in a comparative perspective	14 de Março de 2019
Infraestruturas	INFRAIA-01-2018-2019	Integrating Activities for Advanced Communities	20 de Março de 2019
	INFRASUPP-01-2018-2019	Policy and international cooperation measures for research infrastructures	20 de Março de 2019
Pesquisa e Inovação Responsáveis	SwafS-12-2019	The gender perspective of science, technology and innovation (STI) in dialogue with third countries	02 de Abril de 2019
	SwafS-15-2018-2019	Exploring and supporting citizen science	02 de Abril de 2019
	SwafS-16-2019	Ethics of Innovation: the challenge of new interaction modes (maximise social impact of innovation)	02 de Abril de 2019
Transportes	LC-MG-1-6-2019	Aviation operations impact on climate change	24 de Abril de 2019

Tipos de Ação

As chamadas do Horizonte 2020 (H2020) podem ter diferentes tipos de ação (esquemas de financiamento).

O tipo de ação deverá demonstrar:

- ☐ O escopo do que é financiado;
- ☐ A taxa de reembolso;
- ☐ Critérios de avaliação específicos para se qualificar para financiamento.

Os tipos de ações H2020 que permitem participação brasileira são:



01.

Horizonte 2020 – Visão
Geral do Programa

02.

Condições de
participação e
financiamento para o
Brasil

Modalidades de participação

As diferentes modalidades de participação para **instituições brasileiras** no âmbito do programa H2020:



Condições de Financiamento

As instituições brasileiras tem financiamento garantido para participar no H2020 em caso de:

Bolsas individuais

- Os brasileiros são **elegíveis** a receber bolsas individuais:
 - Programa MSCA - MSCA Individual Fellowships (IF);
 - European Research Council (ERC).

Projetos Colaborativos Brasileiros elegíveis para financiamento do H2020

- Quando a chamada/tópico do H2020 **estabelece claramente** que os **candidatos do Brasil são elegíveis** para receber financiamento do H2020.

Participação Essencial

- Quando a **participação** das instituições brasileiras como beneficiárias de financiamento é **considerada essencial** para a execução do projeto, uma vez que prevê: competências excepcionais; acesso a infraestruturas de pesquisa; acesso a determinados ambientes geográficos; acesso a dados.

Exceções

Administrative Arrangement

3 mecanismos de cooperação

Financiamento das instituições brasileiras em ações colaborativas no Horizonte 2020

Geminação de atividades colaborativas paralelas

Chamadas coordenadas para propostas de atividades colaborativas



Assinatura no dia 22 de maio, em Bruxelas
CONFAP, CNPq, FINEP

Administrative Arrangement

Financiamento das instituições brasileiras em ações colaborativas no Horizonte 2020

Identificação conjunta de tópicos e chamadas

Diretrizes a serem publicadas pelas agências brasileiras para auxiliar e conscientizar os candidatos sobre os mecanismos e os tópicos abrangidos

Financiamento a ser fornecido, através das Entidades Brasileiras, aos candidatos bem-sucedidos

Administrative Arrangement

Geminação de atividades colaborativas paralelas

Facilitar a coordenação de atividades (geminação) em projetos de pesquisa e inovação financiados separadamente pelos respectivos programas de financiamento, em áreas específicas de interesse mútuo

Implementadas através da sincronização de chamadas que sejam similares ou complementares em abrangência e conteúdo (ou pela colaboração entre projetos paralelos em andamento).

Administrative Arrangement

Chamadas coordenadas para propostas de atividades colaborativas

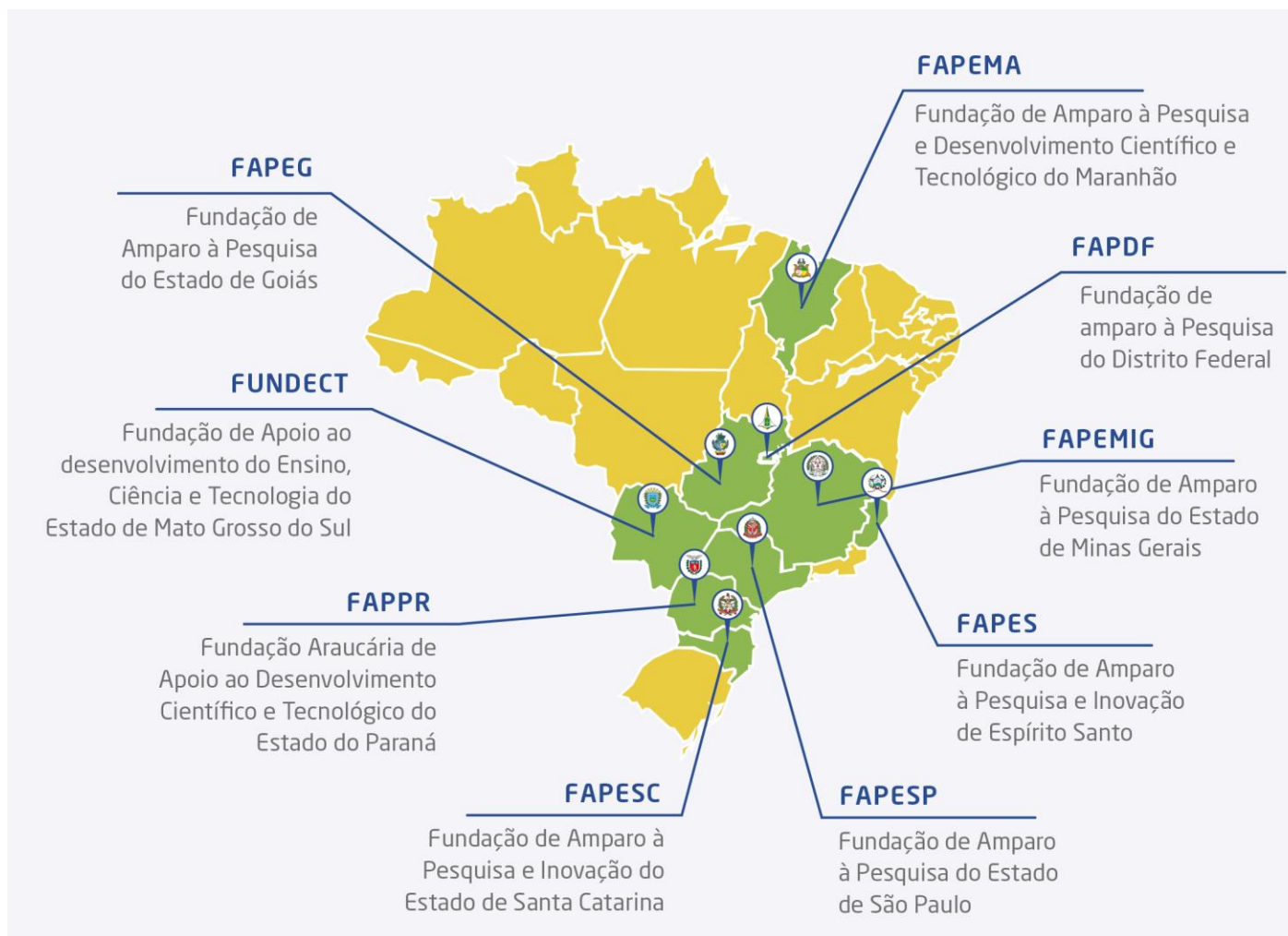
Identificar os setores relevantes, tratar conjuntamente da descrição de chamadas coordenadas para propostas e planejar de forma conjunta calendário para sua implementação.

Publicar e implementar essas chamadas coordenadas de propostas no âmbito dos seus respectivos programas de financiamento de acordo com suas regras aplicáveis.

Realizar a avaliação das propostas de acordo com suas regras e práticas aplicáveis.

Mecanismos de cofinanciamento das FAPs

As entidades e respectivos estados listados abaixo já fazem parte do esquema de cofinanciamento:



ENRICH in Brazil is made possible with the support
of the CEBRABIC project and its partners



Fraunhofer Institute for Production
Systems and Design Technology (IPK)

